

Baril Coatings Etten-Leur  
Nieuwe Donk 15  
4879AC Etten-Leur  
NETHERLANDS

Eurofins Product Testing A/S  
Smedeskovvej 38  
8464 Galten  
Denmark

CustomerSupport@eurofins.com  
www.eurofins.com/VOC-testing

## VOC EMISSION TEST REPORT

### EMICODE

23 March 2021

### 1 Sample Information

Sample name	89701 Copperant Flora Hout- en Vloerlak
Batch no.	20097261
Production date	11/01/2021
Product type	Floor coating
Sample reception	01/02/2021

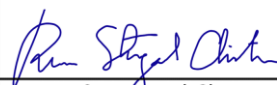
### 2 Brief Evaluation of the Results

Regulation or protocol	Conclusion	Version of regulation or protocol
EMICODE	EC 1 PLUS	April 2020

Full details based on the testing and direct comparison with limit values are available in the following pages  
Regarding pass/fail decision rule please see appendix



Pernille Krintel  
Analytical Service Manager



Rasmus Stengaard Christensen  
Analytical Service Manager, MSc in Chemistry

## Table of contents

<b>1</b>	<b>Sample Information</b>	<b>1</b>
<b>2</b>	<b>Brief Evaluation of the Results</b>	<b>1</b>
<b>3</b>	<b>Applied Test Methods</b>	<b>3</b>
3.1	General Test References	3
3.2	Specific Laboratory Sampling and Analyses	3
<b>4</b>	<b>Test Parameters, Sample Preparation and Deviations</b>	<b>4</b>
4.1	VOC Emission Chamber Test Parameters	4
4.2	Preparation of the Test Specimen	4
4.3	Picture of Sample	4
4.4	Deviations from Referenced Protocols and Regulations	4
<b>5</b>	<b>Results</b>	<b>5</b>
5.1	VOC Emission Test Results after 3 Days	5
5.2	VOC Emission Test Results after 28 Days	7
<b>6</b>	<b>Summary and Evaluation of the Results</b>	<b>8</b>
6.1	Comparison with Limit Values of EMICODE	8
<b>7</b>	<b>Appendices</b>	<b>9</b>
7.1	Chromatogram of VOC Emissions after 3 Days	9
7.2	Chromatogram of VOC Emissions after 28 Days	9
7.3	How to Understand the Results	10
7.4	Applied LCI and NIK Values	11
7.5	Description of VOC Emission Test	12
7.6	Quality Assurance	13
7.7	Accreditation	14
7.8	Uncertainty of the Test Method	14
7.9	Decision Rules	14
7.10	Version History	14

### 3 Applied Test Methods

#### 3.1 General Test References

Regulation, protocol or standard	Version	Reporting limit VOC [ $\mu\text{g}/\text{m}^3$ ]	Calculation of TVOC	Combined uncertainty <sup>a</sup> [RSD(%)]
EN 16516	2017 + A1:2020	5	Toluene equivalents	22%
ISO 16000 -3 -6 -9 -11	2006-2011 depending on part	2	Toluene equivalents	22%
ASTM D5116-10	2010	-	-	-
EMICODE	April 2020	5	Toluene equivalents	22%

#### 3.2 Specific Laboratory Sampling and Analyses

Procedure	External Method	Internal SOP	Quantification limit / sampling volume	Analytical principle	Uncertainty <sup>a</sup> [RSD(%)]
Sample preparation	ISO 16000-11:2006, EN 16516:2017+A1:2020, AgBB:2018, EMICODE:2020	71M549810	-	-	-
Emission chamber testing	ISO 16000-9:2006, EN 16516:2017+A1:2020	71M549811	-	Chamber and air control	-
Sampling of VOC	ISO 16000-6:2011, EN 16516:2017+A1:2020	71M549812	5 L	Tenax TA	-
Analysis of VOC	ISO 16000-6:2011, EN 16516:2017+A1:2020	71M542808B	1 $\mu\text{g}/\text{m}^3$	ATD-GC/MS	10%
Sampling of aldehydes	ISO 16000-3:2011, EN 16516:2017+A1:2020	71M549812	35 L	DNPH	-
Analysis of aldehydes	ISO 16000-3:2011, EN 16516:2017+A1:2020	71M548400	3-6 $\mu\text{g}/\text{m}^3$	HPLC-UV	10%

The results are only valid for the tested sample(s).

This report may only be copied or reprinted in its entirety, parts of it only with a written acceptance by Eurofins.

## 4 Test Parameters, Sample Preparation and Deviations

### 4.1 VOC Emission Chamber Test Parameters

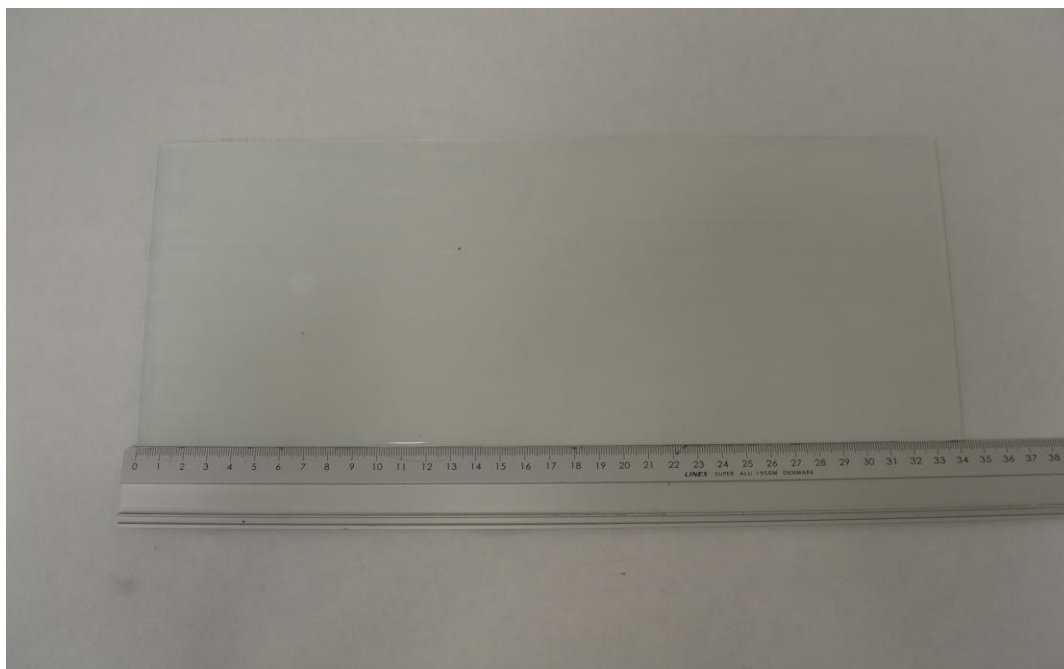
Parameter	Value	Parameter	Value
Chamber volume, V[L]	119	Preconditioning period	-
Air Change rate, n[h <sup>-1</sup> ]	0.5	Test period	15/02/2021 - 15/03/2021
Relative humidity of supply air, RH [%]	50 ± 3	Area specific ventilation rate, q [m/h or m <sup>3</sup> /m <sup>2</sup> /h]	1.25
Temperature of supply air, T [°C]	23 ± 1	Loading factor [m <sup>2</sup> /m <sup>3</sup> ]	0.4
		Test scenario	Flooring or ceiling

### 4.2 Preparation of the Test Specimen

The sample was homogenised and applied onto a glass plate.

Number of Layers	Application amount, g/m <sup>2</sup>	Drying time, h
1	150	-

### 4.3 Picture of Sample



### 4.4 Deviations from Referenced Protocols and Regulations

No deviations from the referenced test methods were observed.

## 5 Results

### 5.1 VOC Emission Test Results after 3 Days

	CAS No.	Retention time [min]	ID-Cat	Specific Conc. [µg/m³]	Toluene eq. [µg/m³]	Specific SER [µg/(m²·h)]	R <sub>D</sub>
<b>VOC with NIK/LCI</b>							
Triethylamine *	121-44-8	2.80	1	720	330	890	12
2-Ethyl-1-hexanol	104-76-7	9.01	1	< 5	< 5	< 7	
N-Methyl-2-pyrrolidone *	872-50-4	9.18	1	< 5	< 5	< 7	
Dipropylenglykol- mono-t-butylether *	132739-31-2	10.72	1	76	45	95	0.094
Dipropylenglykol- mono-n-butylether (two isomers) *	29911-28-2	11.77	1	15000	10000	19000	19
Butylhydroxytoluene BHT *	128-37-0	14.39	1	11	14	13	0.11
<b>VOC without NIK/LCI</b>							
Not identified *		2.01	4	< 5	< 5	< 7	
Not identified *		2.97	4	< 5	< 5	< 7	
2-Methyl-2-propenoic acid *	79-41-4	4.63	2	6.1	6.1	7.6	
Not identified *		8.81	4	< 5	< 5	< 7	
Not identified *		10.03	4	< 5	< 5	< 7	
Not identified *		10.59	4	< 5	< 5	< 7	
Pentanedioic acid, 2-methyl-, dimethyl ester *	14035-94-0	10.87	2	5.5	5.5	< 7	
Not identified *		10.92	4	< 5	< 5	< 7	
Not identified *		10.99	4	< 5	< 5	< 7	
Not identified *		11.15	4	< 5	< 5	< 7	
Not identified *		11.92	4	84	84	110	
Not identified *		11.96	4	320	320	390	
Not identified *		12.18	4	21	21	26	
Not identified *		12.55	4	< 5	< 5	< 7	
Not identified *		12.63	4	< 5	< 5	< 7	
Not identified *		12.68	4	< 5	< 5	< 7	
Not identified *		13.02	4	< 5	< 5	< 7	
Not identified *		13.11	4	< 5	< 5	< 7	
Not identified *		13.28	4	< 5	< 5	< 7	
Not identified *		13.57	4	< 5	< 5	< 7	
Not identified *		13.83	4	20	20	25	
Not identified *		13.90	4	< 5	< 5	< 7	
Not identified *		14.11	4	< 5	< 5	< 7	

The results are only valid for the tested sample(s).

This report may only be copied or reprinted in its entirety, parts of it only with a written acceptance by Eurofins.

	CAS No.	Retention time [min]	ID-Cat	Specific Conc. [µg/m³]	Toluene eq. [µg/m³]	Specific SER [µg/(m²·h)]	R <sub>D</sub>
Hexadecamethyl-heptasiloxane *	541-01-5	14.75	2	< 5	< 5	< 7	
<b>Sum of VOC without NIK/LCI</b>				450	450	560	
<b>VVOC compounds</b>							
None determined							
<b>TVOC</b>				< 5	< 5	< 7	
<b>SVOC compounds</b>							
Not identified *		15.06	4	72	72	90	
<b>TSVOC</b>				72	72	90	
<b>Carcinogens</b>							
<b>Total carcinogens</b>				< 1	< 1	< 2	
<b>Aldehydes</b>							
Formaldehyde	50-00-0		1	< 3		< 4	
Acetaldehyde	75-07-0		1	< 3		< 4	
Propionaldehyde	123-38-6		1	< 3		< 4	
Butyraldehyde	123-72-8		1	< 3		< 4	
Acrolein *	107-02-8		1	< 5		< 7	
2-Butenal *	123-73-9		1	< 5		< 7	
Glutaraldehyde *	111-30-8		1	< 5		< 7	
Octanal *	124-13-0		1	< 5		< 7	
Nonanal *	124-19-6		1	< 5		< 7	
Decanal *	112-31-2		1	< 5		< 7	
<b>R-values</b>							31
<b>TVOC</b>				17000	11000	21000	

## 5.2 VOC Emission Test Results after 28 Days

	CAS No.	Retention time [min]	ID-Cat	Specific Conc. [µg/m³]	Toluene eq. [µg/m³]	Specific SER [µg/(m².h)]	R <sub>D</sub>
<b>VOC with NIK/LCI</b>							
Triethylamine *	121-44-8	2.93	1	21	11	26	0.35
Benzyl alcohol *	100-51-6	9.22	1	< 5	< 5	< 7	
Dipropylenglykol- mono-n-butylether (two isomers) *	29911-28-2	11.82	1	36	19	45	0.045
Butylhydroxytoluene BHT *	128-37-0	14.53	1	< 5	< 5	< 7	
<b>VOC without NIK/LCI</b>							
Not identified *		13.71	4	< 5	< 5	< 7	
Not identified *		13.97	4	7.9	7.9	9.9	
<b>Sum of VOC without NIK/LCI</b>				7.9	7.9	9.9	
<b>VVOC compounds</b>							
None determined							
<b>TVOC</b>				< 5	< 5	< 7	
<b>SVOC compounds</b>							
Not identified *		15.21	4	6.0	6.0	7.5	
<b>TSVOC</b>				6.0	6.0	7.5	
<b>Carcinogens</b>							
<b>Total carcinogens</b>				< 1	< 1	< 2	
<b>Aldehydes</b>							
Formaldehyde	50-00-0		1	< 3		< 4	
Acetaldehyde	75-07-0		1	< 3		< 4	
Propionaldehyde	123-38-6		1	< 3		< 4	
Butyraldehyde	123-72-8		1	< 3		< 4	
Acrolein *	107-02-8		1	< 5		< 7	
2-Butenal *	123-73-9		1	< 5		< 7	
Glutaraldehyde *	111-30-8		1	< 5		< 7	
Octanal *	124-13-0		1	< 5		< 7	
Nonanal *	124-19-6		1	< 5		< 7	
Decanal *	112-31-2		1	< 5		< 7	
<b>R-values</b>							0.40
<b>TVOC</b>				65	38	82	

The results are only valid for the tested sample(s).

This report may only be copied or reprinted in its entirety, parts of it only with a written acceptance by Eurofins.

## 6 Summary and Evaluation of the Results

### 6.1 Comparison with Limit Values of EMICODE

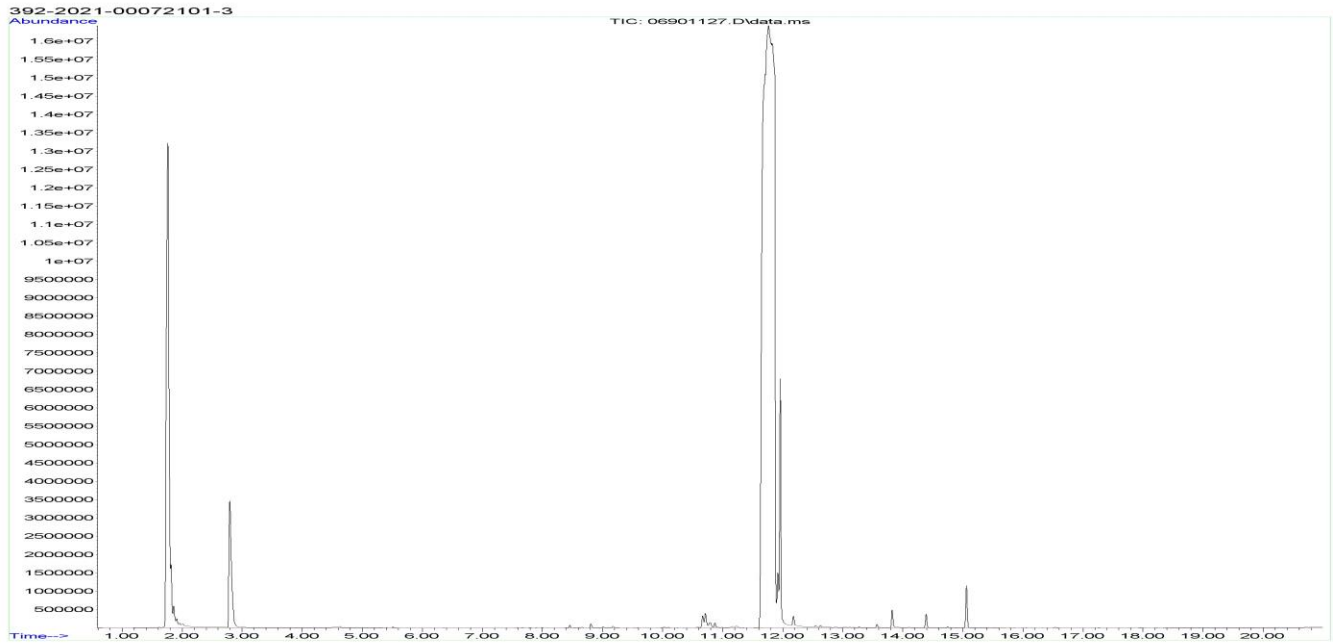
Parameter	Concentration $\mu\text{g}/\text{m}^3$	EC 2 $\mu\text{g}/\text{m}^3$	EC 1 $\mu\text{g}/\text{m}^3$	EC 1 PLUS $\mu\text{g}/\text{m}^3$
<b>TVOC + TSVOC 28 days (EN 16516)</b>	44	$\leq 400$	$\leq 150$	$\leq 100$
<b>TSVOC 28 days (EN 16516)</b>	6.0	$\leq 100$	$\leq 50$	$\leq 40$
<b>Sum without NIK/LCI 28 days</b>	7.9	$> 40$		$\leq 40$
<b>R-value 28 days (dimensionless)</b>	0.40	$> 1$		$\leq 1$
<b>Formaldehyde 3 days</b>	$< 3$	$\leq 50$		
<b>Acetaldehyde 3 days</b>	$< 3$	$\leq 50$		
<b>Sum Formaldehyde + Acetaldehyde [ppm]</b>	$< 0.005$	$\leq 0.05$		
<b>Sum carcinogens 3 days</b>	$< 1$	$\leq 10$		
<b>Sum carcinogens 28 days</b>	$< 1$	$\leq 1$		

This test report does not alone entitle to use the protected trademark label EMICODE. For the use of an EMICODE label a license has to be applied for at the GEV, Düsseldorf, Germany. A license can only be granted for ready-to use products, if some additional requirements on contents of certain chemicals (e.g. solvent-free) are fulfilled.

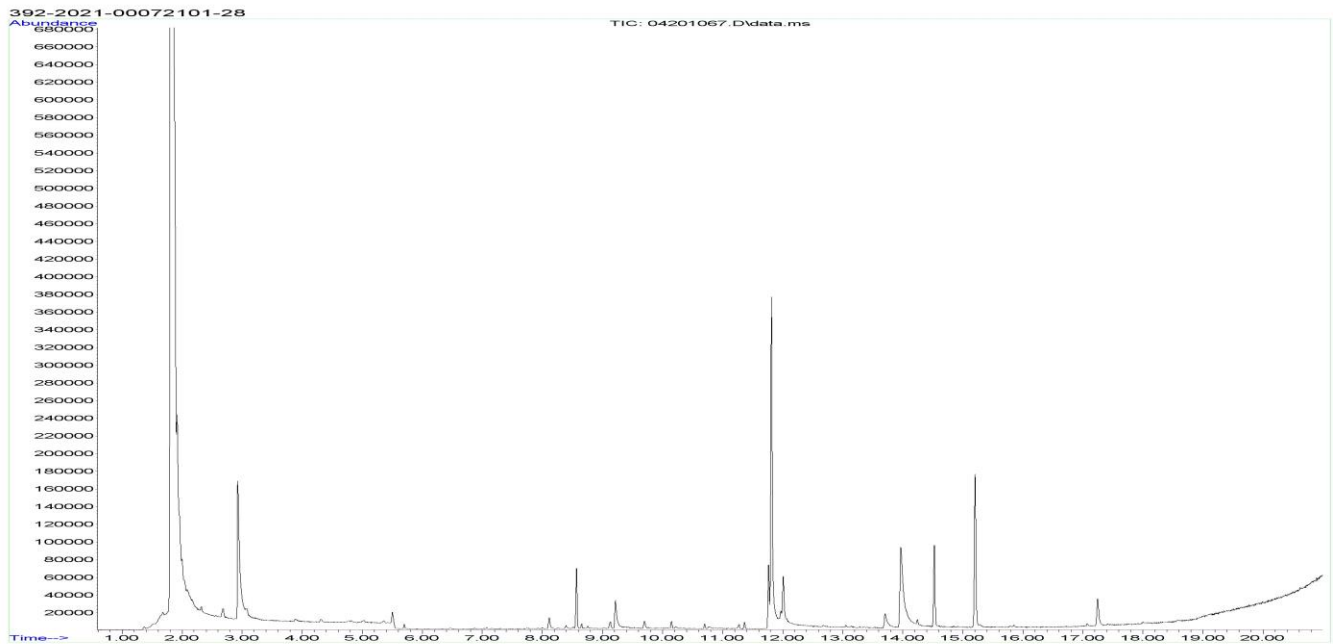


## 7 Appendices

### 7.1 Chromatogram of VOC Emissions after 3 Days



### 7.2 Chromatogram of VOC Emissions after 28 Days



Please consider the different scales.

The results are only valid for the tested sample(s).

This report may only be copied or reprinted in its entirety, parts of it only with a written acceptance by Eurofins.

## 7.3 How to Understand the Results

### 7.3.1 Acronyms Used in the Report

<	Means less than
>	Means bigger than
*	Not a part of our accreditation
±	Please see section regarding uncertainty in the Appendices
§	Deviation from method. Please see deviation section
a	The method is not optimal for very volatile compounds. For these substances smaller results and a higher measurement uncertainty cannot be ruled out
b	The component originates from the substrate and is thus removed
c	The results have been corrected by the emission from the substrate
d	Very polar organic compounds are not suitable for reliable quantification using Tenax TA adsorbent and HP-5ms GC column. A high degree of uncertainty must be expected
e	The component may be overestimated due to contribution from the system
SER	Specific Emission Rate

### 7.3.2 Explanation of ID Category

#### Categories of Identity:

- 1: Identified by comparison with a mass spectrum obtained from library and supported by other information and quantified through specific calibration.
- 2: Identified by comparison with a mass spectrum obtained from library and supported by other information. Quantified as toluene equivalent.
- 3: Identified with a lower match by comparison with a mass spectrum obtained from a library. Quantified as toluene equivalent.
- 4: Not identified, quantified as toluene equivalent.

## 7.4 Applied LCI and NIK Values

### 7.4.1 LCI/NIK Values for Compounds found after 3 Day Measurements

Compound	CAS No.	AgBB 2018 NIK [µg/m³]
Triethylamine *	121-44-8	60
2-Ethyl-1-hexanol	104-76-7	300
N-Methyl-2-pyrrolidone *	872-50-4	1800
Dipropylenglykol- mono-t-butylether *	132739-31-2	810
Dipropylenglykol- mono-n-butylether (two isomers) *	29911-28-2	810
Butylhydroxytoluene BHT *	128-37-0	100

### 7.4.2 LCI/NIK Values for Compounds found after 28 Day Measurements

Compound	CAS No.	AgBB 2018 NIK [µg/m³]
Triethylamine *	121-44-8	60
Benzyl alcohol *	100-51-6	440
Dipropylenglykol- mono-n-butylether (two isomers) *	29911-28-2	810
Butylhydroxytoluene BHT *	128-37-0	100

## 7.5 Description of VOC Emission Test

### 7.5.1 Test Chamber

The test chamber is made of stainless steel. A multi-step air clean-up is performed before loading the chamber, and a blank check of the empty chamber is performed.

The chamber operation parameters are as described in the test method section. (EN 16516, ISO 16000-9, internal method no.: 71M549811).

### 7.5.2 Expression of the Test Results

All test results are calculated as specific emission rate, and as extrapolated air concentration in the European Reference Room (EN 16516, AgBB, EMICODE, M1 and Indoor Air Comfort).

### 7.5.3 Testing of Carcinogenic VOCs

The emission of carcinogens (EU Categories C1A and C1B, as per European law) is tested by drawing sample air from the test chamber outlet through Tenax TA tubes after the specified duration of storage in the ventilated test chamber. Analysis is performed by ATD-GC/MS (automated thermal desorption coupled with gas chromatography and mass spectroscopy using 30 m HP-5 (slightly polar) column with 0.25 mm ID and 0.25 µm film, Agilent) (EN 16516, ISO 16000-6, internal methods no.: 71M549812 / 71M542808B).

All identified carcinogenic VOCs are listed; if a carcinogenic VOC is not listed then it has not been detected. Quantification is performed using the TIC signal and authentic response factors, or the relative response factors relative to toluene for the individual compounds.

This test only covers substances that can be adsorbed on Tenax TA and can be thermally desorbed. If other emissions occur, then these substances cannot be detected (or with limited reliability only).

### 7.5.4 Testing of VOC, SVOC and VVOC

The emissions of volatile organic compounds are tested by drawing sample air from the test chamber outlet through Tenax TA tubes after the specified duration of storage in the ventilated test chamber. Analysis is performed by ATD-GC/MS using HP-5 column (30 m, 0.25mm ID, 0.25µm film) (EN 16516, ISO 16000-6, internal methods no.: 71M549812 / 71M542808B).

All single substances that are listed with a LCI/NIK value in the latest publications (hereafter referred to as target compounds) are identified if present. All other appearing VOCs are identified as far as possible. Quantification of target compounds is done using the TIC signal and authentic response factors, or the relative response factors relative to toluene. For certain compound groups, which differ significantly in chemistry from toluene, quantification is performed relative to a representative member of the group for more accurate and precise results. This can include quantification of for example glycols and acids. In addition to that, all results are also expressed in toluene equivalents. All non-target compounds, as well as all non-identified substances, are quantified in toluene equivalents.

The results of the individual substances are calculated in three groups depending on their retention time when analyzing using a non-polar column (HP-1):

- Volatile Organic Compounds (VOC) are defined as: All substances eluting between and including n-hexane (n-C6) and n-hexadecane (n-C16)
- Semi-Volatile Organic Compounds (SVOC) are defined as: All substances eluting after n-hexadecane (n-C16) and before and including n-docosane (n-C22)
- Very Volatile Organic Compounds (VVOC) are defined as: All substances eluting before n-hexane (n-C6).

Total Volatile Organic Compounds (TVOC) is calculated by summation of all individual VOCs with a concentration  $\geq 5 \mu\text{g}/\text{m}^3$ . The TVOC can be expressed either in toluene equivalents as defined in EN 16516 and similar to ISO 16000-6, or as the sum of concentrations using specific or relative response factors. In the case of summation of concentrations using authentic or relative response factors, the toluene equivalent is applied to all non-target and non-identified VOCs before summing up. Compounds regarded as VOC in line with the above definition but elute before n-C6 or after n-C16 on the HP-5 column are treated as VOC, and are thus added to the TVOC.

Total Semi-Volatile Organic Compounds (TSVOC) is calculated by the summation of all individual SVOCs expressed in toluene equivalents with a concentration  $\geq 5 \mu\text{g}/\text{m}^3$ , as defined in EN 16516. VOCs that are regarded as VOC in line with the above definition, but elute after n-C16 in this test, are not added to the TSVOC.

Total Very Volatile Organic Compounds (TVVOC) is calculated by the summation of all individual VVOCs with a concentration  $\geq 5 \mu\text{g}/\text{m}^3$  and expressed in toluene equivalents. VOCs that are regarded as VOC in line with the above definition, but elute before n-C6 in this test, are not added to the TVVOC.

This test only covers substances which can be adsorbed on Tenax TA and can be thermally desorbed. If emissions of substances outside these specifications occur then these substances cannot be detected (or with limited reliability only).

### 7.5.5 Calculation of R Values with LCI Lists

The concentrations of detected compounds  $\geq 5 \mu\text{g}/\text{m}^3$  are divided by their respective LCI/NIK value (if defined in the given publication). The sum of the quotients gives the R value, which can be mathematically expressed:

$$R = \sum_i^n \left( \frac{c_i}{\text{NIK}_i} + \dots + \frac{c_n}{\text{NIK}_n} \right)$$

This R value is calculated, depending on the purpose of this test, for the European LCI list, for the German LCI/NIK list ( $R_D$ ), and/or for the Belgian LCI list ( $R_B$ ).

All VOCs without published LCI/NIK value and concentration  $\geq 5 \mu\text{g}/\text{m}^3$  are summed up as sum of VOCs without LCI/NIK if required by the standard or protocol.

### 7.5.6 Testing of Aldehydes

The presence of aldehydes is tested by drawing air samples from the test chamber outlet through DNPH-coated silicagel tubes after the specified duration of storage in the ventilated test chamber. Analysis is performed by solvent desorption and subsequently by HPLC and UV-/diode array detection.

The absence of formaldehyde and other aldehydes is stated if UV detector response at the specific wavelength is lacking at the specific retention time in the chromatogram. Otherwise it is checked whether the reporting limit is exceeded. In this case the identity is finally checked by comparing full scan sample UV spectra with full scan standard UV spectra.

## 7.6 Quality Assurance

Before loading the test chamber, a blank check of the empty chamber is performed and compliance with background concentrations in accordance with EN 16516 / ISO 16000-9 is determined.

Air sampling at the chamber outlet and subsequent analysis is performed in duplicate. Relative humidity, temperature and air change rate in the chambers is logged every 5 minutes and checked daily. A double determination is performed on random samples at a regular interval and results are registered in a control

The results are only valid for the tested sample(s).

This report may only be copied or reprinted in its entirety, parts of it only with a written acceptance by Eurofins.

chart to ensure the uncertainty and reproducibility of the method.

The stability of the analytical system is checked by a general function test of device and column, and by use of control charts for monitoring the response of individual substances prior to each analytical sequence.

## 7.7 Accreditation

The testing methods described above are accredited on line with EN ISO/IEC 17025 by DANAK (no. 522). This accreditation is valid worldwide due to mutual approvals of the national accreditation bodies (ILAC/IAF, see also [www.eurofins.com/galten.aspx#accreditation](http://www.eurofins.com/galten.aspx#accreditation)).

Not all parameters are covered by this accreditation. The accreditation does not cover parameters marked with an asterisk (\*), however analysis of these parameters is conducted at the same level of quality as for the accredited parameters.

## 7.8 Uncertainty of the Test Method

The relative standard deviation of the overall analysis is 22%. The expanded uncertainty  $U_m$  equals  $2 \times RSD$ . For further information please visit [www.eurofins.dk/uncertainty](http://www.eurofins.dk/uncertainty).

## 7.9 Decision Rules

Eurofins Product Testing A/S, declare statement of conformity based on the “Binary Statement for Simple Acceptance Rule” described in ILAC’s “Guidelines on decision Rules and Statements of Conformity” ILAC-G8:09/2019.

This means that results above the detection limit are always reported with two significant digits. Results are evaluated with the same number of significant digits as the corresponding limit values, and conformity is based on results being less than or equal to limit values.

For limit values with more than two significant digits, the third digit will be used to confirm whether a result is below or equal to the limit value. It will always be indicated in the evaluation table if this expanded evaluation is performed.

For further information please visit [www.eurofins.dk/product-testing/om-os/beslutningsregler/](http://www.eurofins.dk/product-testing/om-os/beslutningsregler/)

## 7.10 Version History

Report date	Report number	Modification
23/03/2021	392-2021-00072101_G_EN	Current version